

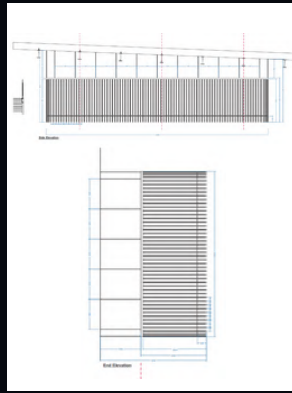
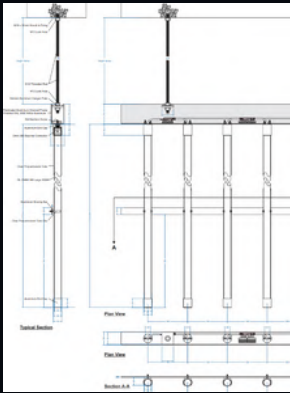
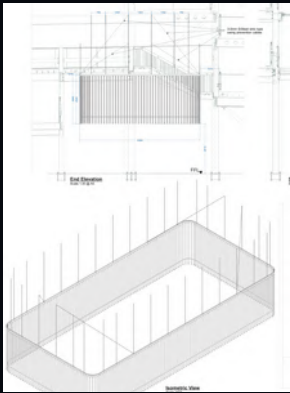


studiot**ech**
PROJECT
LAUREATE

CLIENT Mace

DESIGNER Arup

CONCEPT Designed by Arup, the suspended pendant graciously zones the cycle storage from above whilst also framing the car park ramps at eye level creating different perspectives from each floor.



SOLUTION

A bespoke mounting frame, developed by Studiotech, measures a great 13 metres in length and 6 metres in width. The frame has been custom designed to seamlessly house over 250 2.5m long DALI controlled luminaires whilst also concealing the cables.

PRODUCT

The bespoke frame is secured to the existing structure, utilising the main I-beams. Using a Unistrut clamping system allowed for Studiotech to accurately locate the threaded rod drops to align with the fixing brackets on the bespoke frame. The ceiling and beams tilt on both the X & Y axis so precision measurement was required to ensure accuracy was achieved at every fixed section.

Additionally, sway prevention cable was added to the pendant along with a lower bracing bar to reduce any movement in the frame and fixings.

EXPERIENCE

Each luminaire suspends vertically from the frame, and is 360 degree illuminated, creating a continuous cascade of light visible throughout multiple levels of the travel hub.

